



samex

PROFESSIONAL CUTTING EQUIPMENT

CUTMaster AIR Data Sheet

CUTMaster AIR

Spreading table with an air blowing system



CUTMaster AIR is a spreading table, expanded with an airflow system installed in the worktop.

The applied blower system creates an air cushion, allowing to move very large and heavy layers of material without the slightest effort.

It is possible to apply the blowing only under the selected part of the table, on which heavier materials are spreaded and leaving the standard table tops on the other part.

Table with airflow system is a perfect complement to the production line in the cutting room, allowing for further time savings.

CUTMaster AIR can also be used as a table for feeding cutter system, successfully replacing conveyor belt tables.

Operation is very simple and can be executed only by one person.

Introducing CUTMaster into the production process allows you to increase productivity from 30 to 100% in relation to the traditional spreading.

BASIC FEATURES

	CUTMaster AIR Standard	CUTMaster AIR Super	CUTMaster AIR Super Plus
--	---------------------------	------------------------	-----------------------------

CUTTING TABLE

Width	182 – 242 cm
Length	any length, segments of 1.4 m
Height	86 cm, regulated
Frame	powder coated steel profiles
Table top	25 mm, 2 mm PVC framed, with air flow system

SPREADING MACHINE

Spreading height	up to 20 cm
Roll weight	up to 80 kg
Roll dimension	up to 50 cm
Tracking rails	galvanized steel

END CUTTER

End cutter	manual	automatic	automatic
Layer counter	yes	yes	yes
Setting the cutting length	-	yes	yes
Stopping the end cutter over cut material	manual	automatic	automatic
Cutting height of a single layer	0.5 cm	0.5 cm	2.5 cm
Roller guide of end cutter	yes	yes	yes
Rotational speed	12000 rpm	12000 rpm	800 rpm
Voltage	230V		
Output power	0,70 – 2 kW	0,75 – 2 kW	0,80 – 2 kW
Protection equipment	blade covers	emergency button, blade covers	emergency button, blade covers

OTHER

Holding bar	manual		
Lower power supply	yes	yes	yes

ADDITIONAL OPTIONS

	CUTMaster AIR Standard	CUTMaster AIR Super	CUTMaster AIR Super Plus
--	---------------------------	------------------------	-----------------------------

CUTTING TABLE

Width	width above 242 cm
-------	--------------------

SPREADING MACHINE (XL VERSION)

Spreading height	up to 40 cm
Roll weight	up to 150 kg
Roll dimension	up to 80 cm

ADDITIONAL EQUIPMENT

Pneumatic holding bar	yes	yes	yes
Rotating bar	yes, up to 222 cm	yes, up to 222 cm	yes, up to 222 cm
Board for flat-folded fabrics	yes	yes	yes
Unrolling basket	yes	yes	yes
Larger cones	yes	yes	yes
Upper power supply	yes	yes	yes
Bottom shelves	yes	yes	yes
Paper feeder	yes	yes	yes
Spare parts kit	yes	yes	yes

PHOTOS

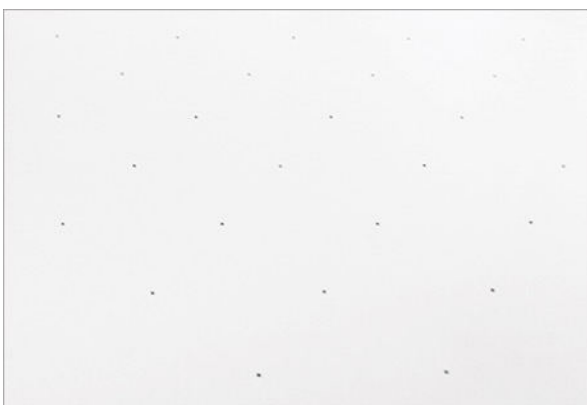
CUTTING TABLE



Special girder connectors provide the light construction and extra stiffness.



The frame and table tops are mounted in segments that allow for easy extension of the table.



Air blow system installed in the table tops.

SPREADING MACHINE

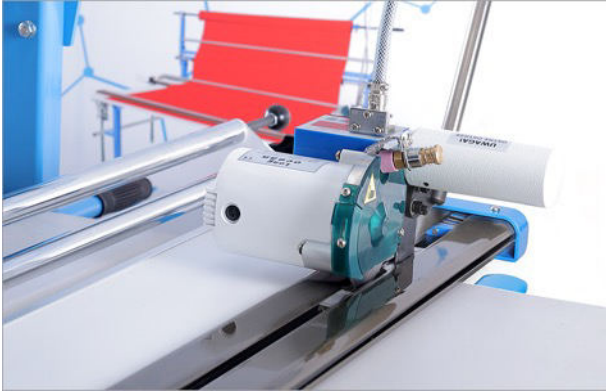


Standard version of the spreading machine allows to work with the rolls of up to 80 kg

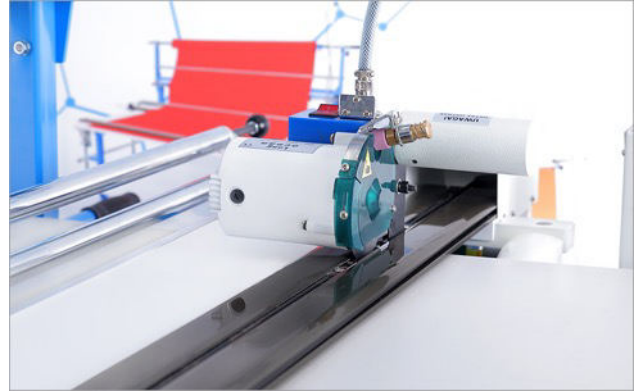


The reinforced version has a stronger body, a thicker material tube and more guide wheels with greater durability.

END CUTTER



Standard version with DYDB-1 manual end cutter



Super version with DYDB-2 automatic end cutter



Super Plus version with DYDB-2B automatic end cutter

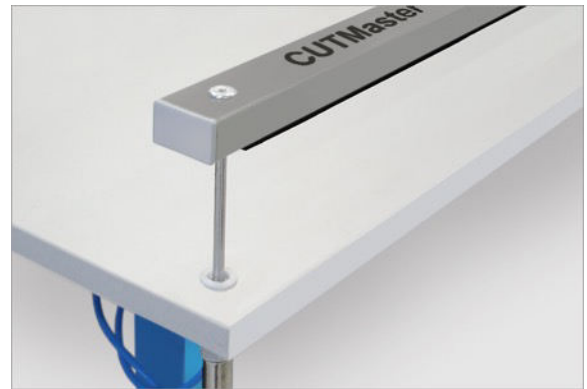


Control panel in Super and Super Plus versions features layer counter, setting the cutting length and the raising height of the cutting track.

HOLDING BAR



Basic version it is operated manually using a handle.



In pneumatic version, the holding bar is operated with a button. It provides a stronger pressure which helps to hold the the material during unrolling.

ADDITIONAL EQUIPMENT



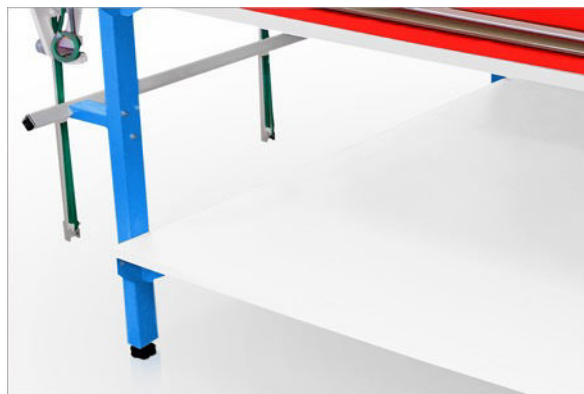
Rotating bar of the spreader makes it easy to quickly reverse the material side.



The basket allows for placing large rolls with a diameter of up to 60 cm .



The spreading board makes it easy to spread flat-folded fabrics.



Bottom shelves are useful to store fabrics rolls and accessories needed in the cutting room.



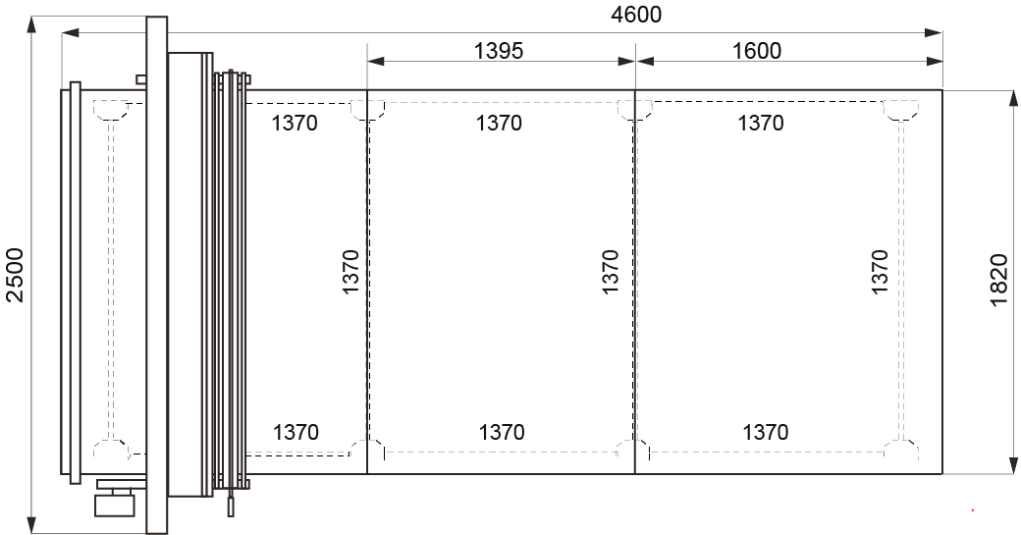
Paper feeder is useful for placing paper below the spreaded material.



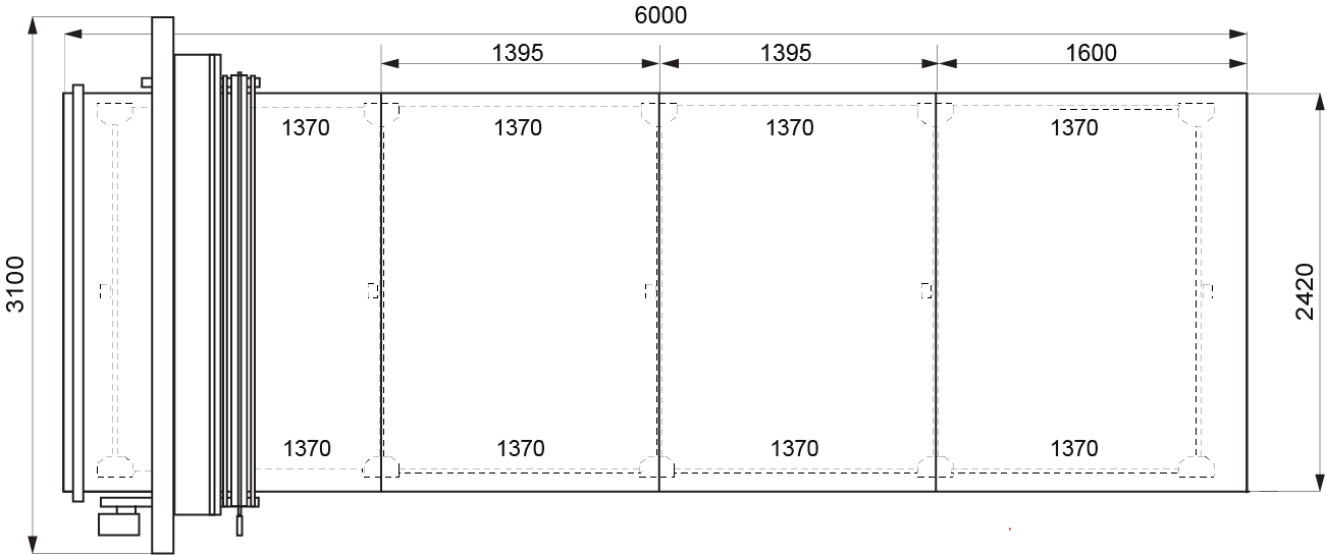
Spare parts kit includes necessary consumables such as blades, sharpeners etc.

TECHNICAL DRAWINGS - EXAMPLES

CUTMaster 180 AIR Super – length 460 cm



CUTMaster 240 AIR Super – length 600 cm





SAMEX Professional Cutting Equipment

93-160 Łódź, ul. Kilińskiego 300
Poland

+48 42 643 05 30

info@samex.com.pl

www.samex.com.pl

www.youtube.com/c/SAMEXPoland